

Polymer Architectural Grille Accessory For Use With Packaged Terminal Air Conditioner or Heat Pump

Installation Instructions



INTRODUCTION

These instructions cover the installation of the Polymer Architectural Grille accessory for the packaged terminal air conditioner and heat pump. The grille securely attaches to the rear of the wall sleeve with four pre-set stainless steel screws.

BEFORE INSTALLTION

IMPORTANT - If grille is being attached to a polymer or plastic wall sleeve, extended foam air baffles must be installed on the grille. Extended foam air baffles are included with the polymer or plastic wall sleeve.

CAUTION

Improper installation of accessory grille could result in condenser (outdoor) air recirculation. This will degrade performance of the unit and possibly shorten product life. Manufacturer does not assume responsibility for improper installation of grille resulting with condenser air recirculation.

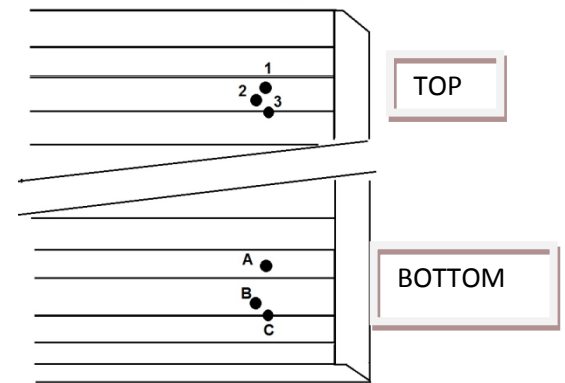
INSTALLATION

Step 1 - Check For Proper Orientation

Before attempting to install grille, be sure to check it for proper orientation. The grille should be oriented with louvers pitching downward.

Step 2 - Check Mounting Screws Locations

Verify the four factory pre-set mounting screws match your wall sleeve mount pattern. Depending on the wall sleeve, repositioning the mounting screws may be required for proper mounting. See Fig. 1



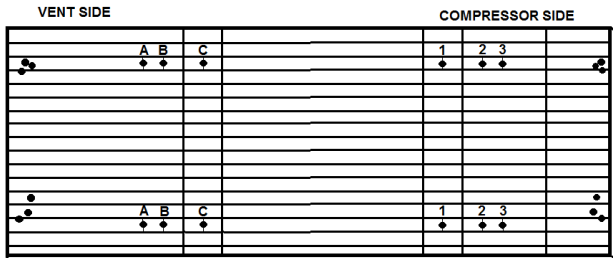
Rear View

Fig. 1 - Mounting Hole Locations

PTAC Manufacturer	Top Mounting Hole Position	Bottom Mounting Hole Position
Amana	2	B
Friedrich	3	C
General Electric	2	B
Gree	1	A
ComfortAire	1	A
LG	2	B
Factory Default	1	A

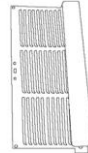
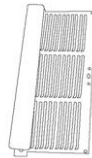
Step 3 - Aligning Air Baffles

Air baffles and deflectors must be aligned for the PTAC unit to ensure a good seal between the unit and the exterior grille to prevent air recirculation, which can cause system failure. See Fig. 2 Use table below to find the proper mounting hole locations. Align air baffle assemblies with PTAC manufacturer holes and attach to grille with screws provided.



Rear View
Fig. 2 - Air Baffles Locations

PTAC Manufacturer	Left Baffle Position	Right Baffle Position
Amana	C	2
Friedrich	C	2
General Electric	B	2
Gree	C	2
ComfortAire	A	3
LG	B	1
Factory Default	C	2



Note: Air deflector must be pointing toward the center of the grille.

Step 4 - Aligning Grille with Wall Sleeve

Firmly grasp grille with 2 hands. Tilt grille to insert through wall sleeve and out the back of the wall sleeve. See Fig. 3

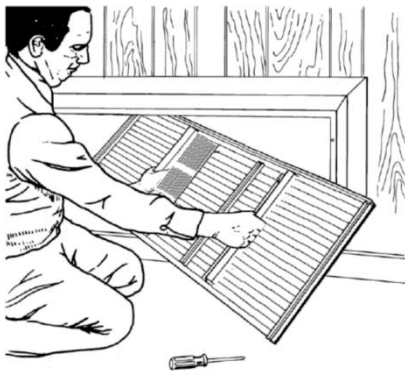


Fig. 3 - Aligning Grille with Wall Sleeve

WARNING

When installing grille, be sure to securely hold with 2 hands to prevent it from falling and causing injury or damage.

Step 5 - Mounting Grille to Wall Sleeve

Line up and insert grille mounting screws into keyhole slots on the back of wall sleeve. See Fig. 4

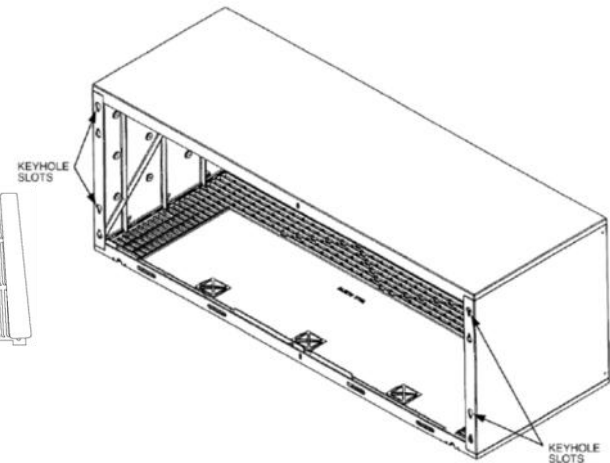


Fig. 4 - Back of Wall Sleeve

Step 6 - Securing Grille

Tighten the four mounting screws to secure the grille to the wall sleeve. See Fig. 5

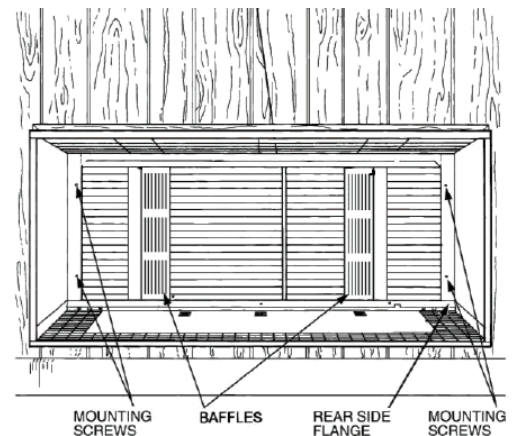


Fig. 5 - Securing Grille to Wall Sleeve

Manufacturer reserves the right to discontinue, or change at any time, specifications or designs without notice and without incurring obligations.